

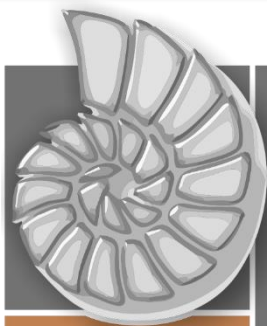


MYGEOSS Final Event
Open Data, Open Source, Open Minds
Brussels, 6 December 2016



WALK & the CITY App

*Measuring walkability in European cities
through open & crowdsource data*



GeoCHOROS

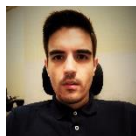
Geospatial Analysis & GIS Research Group

GeoCHOROS –Geospatial Analysis & G.I.S Research Group National Technical University of Athens (N.T.U.A)

<http://geospatial.ntua.gr/>



Yorgos N. PHOTIS, Professor at N.T.U.A
yphotis@mail.ntua.gr



Alex BARTZOKAS-TSIOMPRAS, PhD Candidate at N.T.U.A
abartzok@mail.ntua.gr



George PANAGIOTOPOULOS, PhD Candidate at N.T.U.A
g.panaq@metal.ntua.gr



Picture: Oxford Street, London, UK
Author: Tony Webster

1. What the app is all about...



Walkability Index Map (0-100)



Land Use Mix
(Entropy Index)



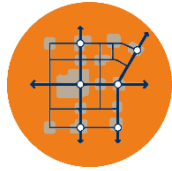
London



Population Density



Athens



Roads Connectivity
(Intersections Density)



Stockholm



Roads Density



Vienna



Pedestrian Streets
Density



Paris



Access (400m) to
Basic Food Stores



Berlin



Access (400m) to
Public Transport



Roma



Slope



The populated 1km² cells of the open & free European Reference Grid (European Environment Agency) have been used for the purpose of the geovisualization of the index's results

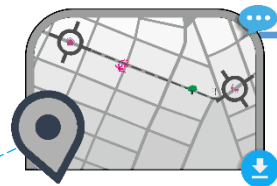
Top 10 Walkable Cities

1. Munich
2. Torino
3. Brussels
4. Vienna
5. Copenhagen
6. Bremen
7. Krakow
8. Helsinki
9. Praha
10. Zurich

App records citizens subjective data about their walking routes & the built environment's dynamic & problematic characteristics



1. Walking Trips GPS Recording



2. Geo-Tagged Walkability Photos

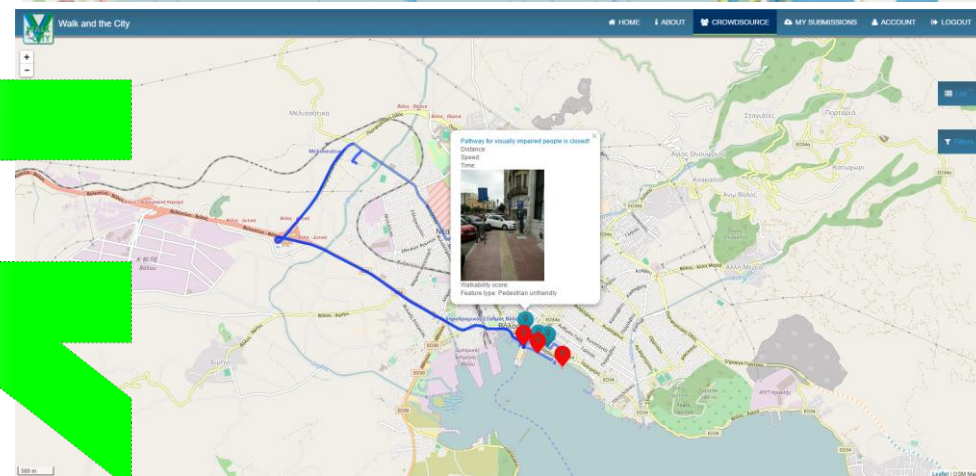
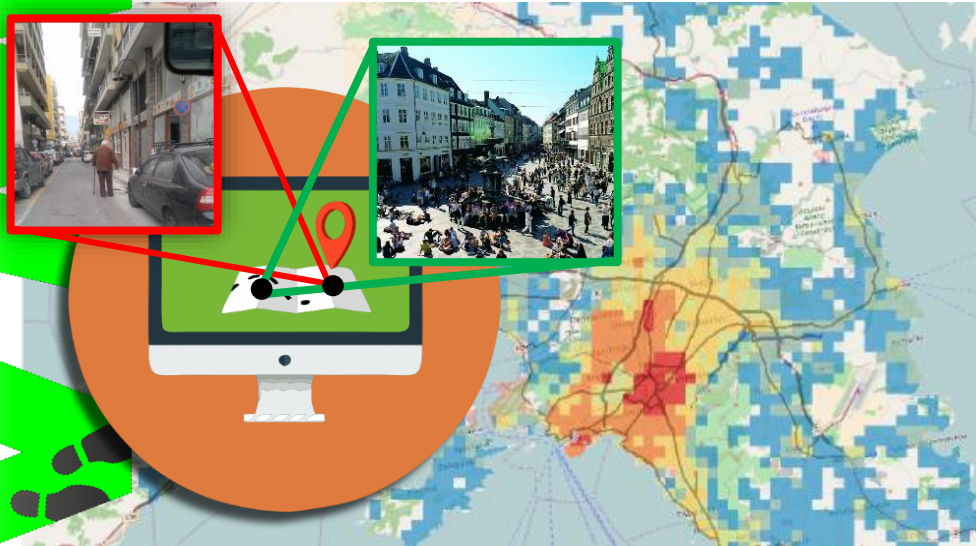


Evaluation Questions about the Built Environment Features



Geo-Tagged photos are categorized on the map depending on the pedestrian friendliness or unfriendliness of their depicted concept

2. Why our app is an innovative idea?



- ❑ Citizens have the chance to **in-situ report** and/or analyze dynamic & problematic urban features regarding walking accessibility of their communities.
- ❑ The WALK & the CITY app constitutes the first **pan-European index** which delves into in a comparative and objective manner the walkability level of our cities by utilizing exclusively open datasets.
- ❑ The proposed index helps citizens and urban authorities to make better spatial decisions as well as to organize sustainable, healthy and **less car-oriented lifestyles**.



- ❑ Last but not least, our Walk & the CITY web-platform acts as a **prototype citizens' observatory** for urban active mobility.